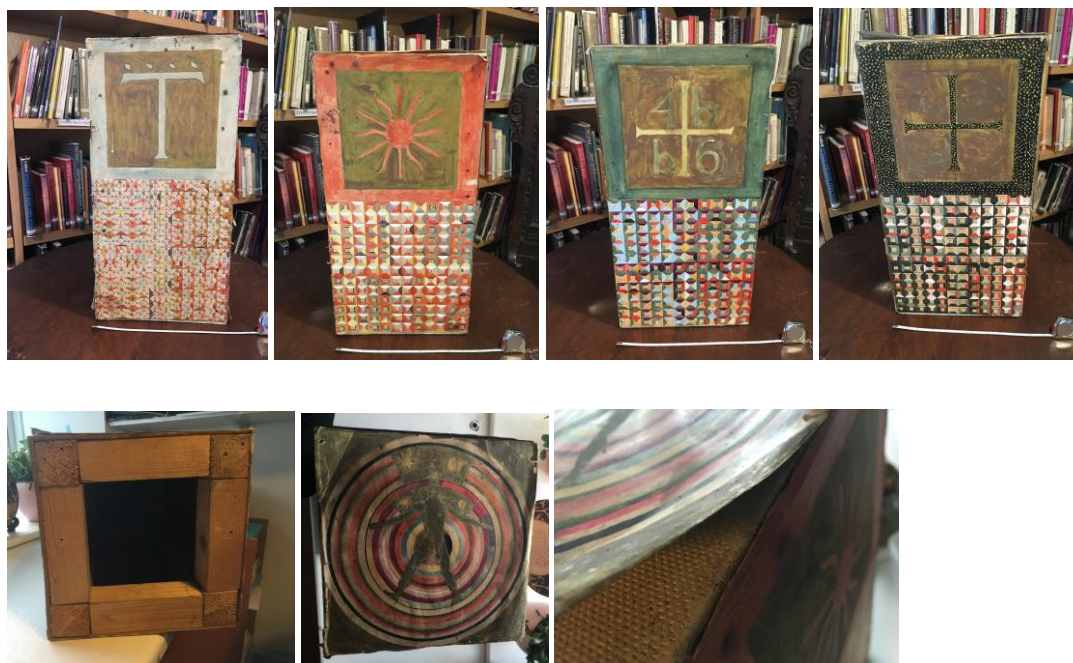


## Museum of Witchcraft and Magic Conservation Treatment Report

**Object:** Altar  
**Accession Number:**  
**Collection/Provenance:**  
**Materials:** Wood, board, paper, paint, adhesive  
**Date of Treatment:** 31.1.2018 – 1.2.2018

**Description:**

Wooden framed altar. Sides made of boarding nailed to the frame and then covered on the four sides and the top with paper, with painted design.



**Condition before treatment:**

While the object is essentially in good condition, there are many areas of lifting and scuffed paper, with some fragments being quite brittle. The vertical edges in particular have many areas of torn, and detaching fragments. The top is particularly dirty and discoloured, with ingrained surface dirt and areas of slightly greasy staining. The iron nails have rusted, causing the paper above to become discoloured and stained by iron corrosion products. There are very small spots of fine slit like spots and deposits on the lower sections. It is

understood that the object was exposed to water during the floods in Boscastle and these deposits may result from this event. There were occasional white paint splatters on the vertical surfaces.



#### Treatment carried out:

1. Surface dirt removed initially by brushing using a pony hair brush and then by gently rubbing the surface with a smoke sponge
2. Darker areas of staining, and the occasional paint splatter, were cleaned further using acetone/deionised water 20:80% solution, applied using a barely damp cotton wool swab.
3. Areas of crumbling and friable paper consolidated using methyl cellulose adhesive
4. Sections of torn paper repaired using methyl cellulose adhesive, having first brushed away any loose dirt or dust from underneath the paper
5. Areas of detached and detaching paper re-adhered using methyl cellulose adhesive applied using a spatula. Sections smoothed out, and down, using a palette knife. While drying the corners of the larger sections of loose paper at two of the corners on the horizontal top were weighted down while drying.





**Display requirements:** Not to be exposed to high light levels. Ideally restrict light levels to 50-150 Lux, depending on length of time on display, eliminate UV and if possible not to be kept on permanent display.

**Mounting:** No specific mounting requirements, as the object is stable standing upright.